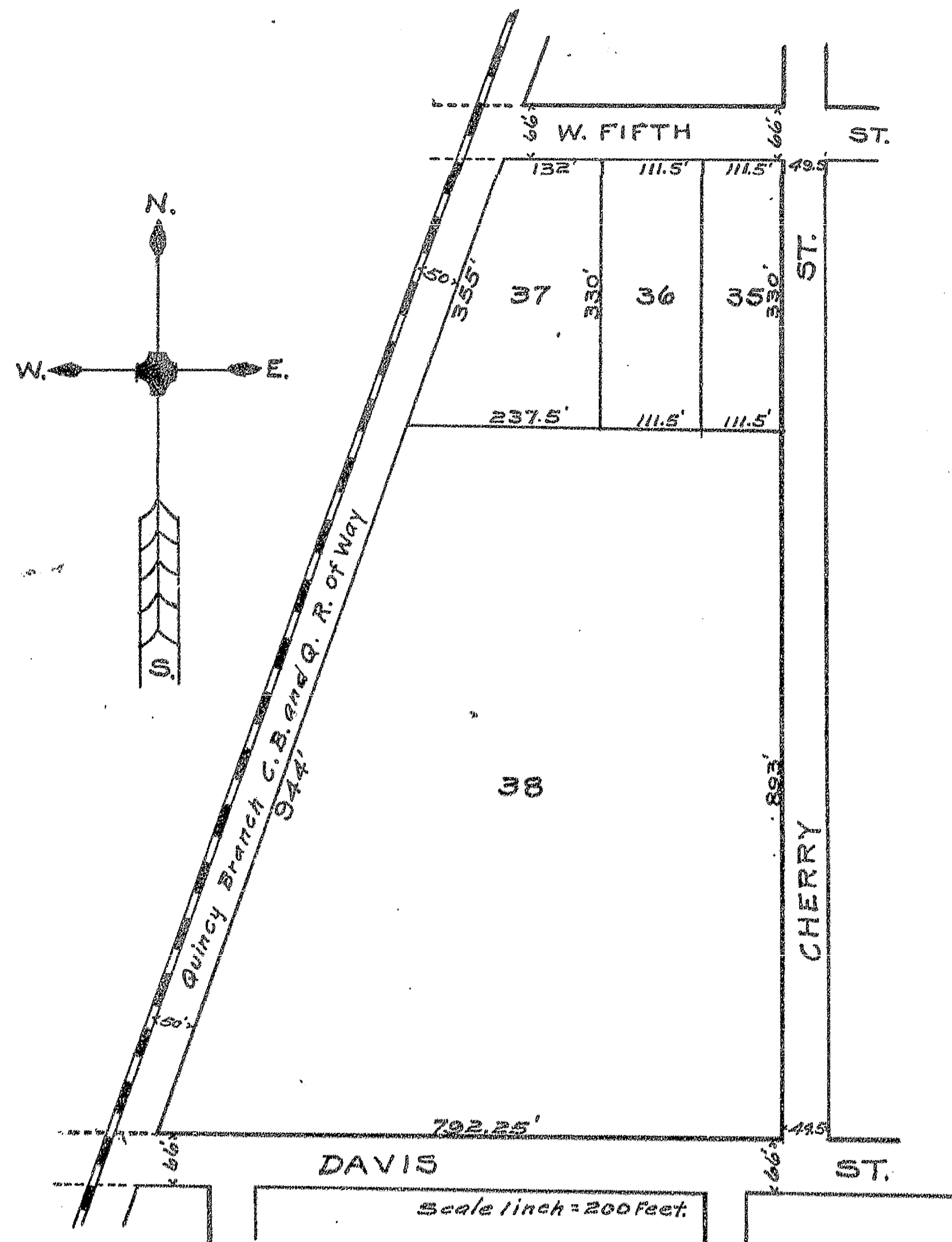


REVENUE PLAT 1926

OF
 THAT PART OF THE THIRD SOUTHERN ADDITION LYING SOUTH OF LOTS 35-36 AND 37 AND BETWEEN SOUTH CHERRY STREET AND THE QUINCY BRANCH OF THE C. B. & Q. R. R. RIGHT OF WAY AND NORTH OF DAVIS STREET, SITUATED IN THE CITY OF GALESBURG KNOX COUNTY, ILLINOIS.
 T. P. 11 N. R. 1 E. OF THE 4TH. P. M.

APPROVED BY THE CITY COUNCIL
 THIS THE 16. DAY OF AUGUST A. D. 1926

*Ben J. Huff Sec. By City Clerk
 Clyde H. Bandy Dep.*



STATE OF ILLINOIS, } ss.

Knox County, } I, *John Wilson* Deputy County Surveyor of said Knox County, do hereby certify that the foregoing and annexed is a true and correct Plat and description of Lands advertised for Survey and Platting by the County Clerk, as taken from the records of Knox County, and by measurements and survey, as provided for in Sections 62 and 63, Chapter 120, Revised Statutes of Illinois, 1903.

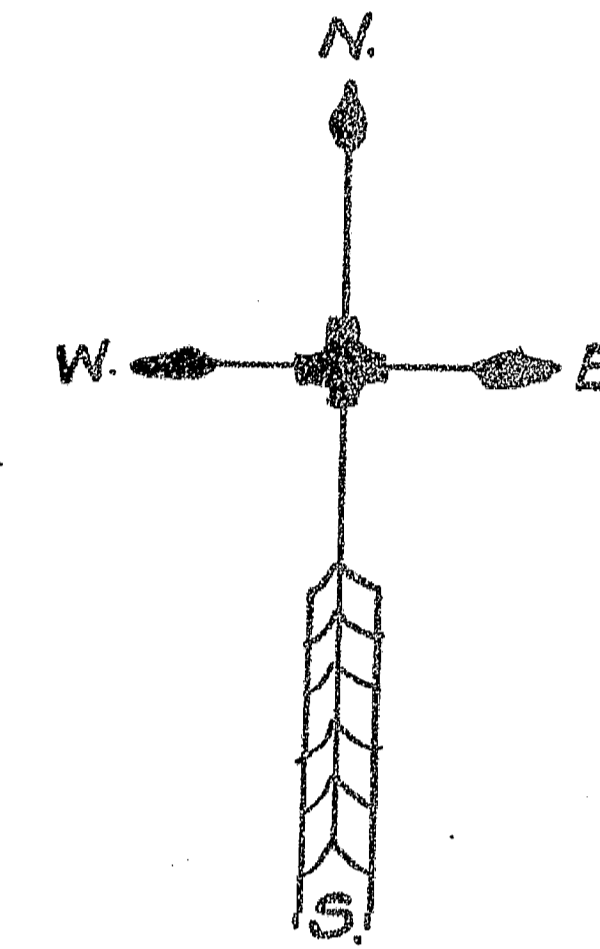
Dated this 3rd. day of August.

Approved by me, this 7th day of August, 1926. *John Wilson* Deputy, County Surveyor.

Geo. A. Larson, County Clerk.

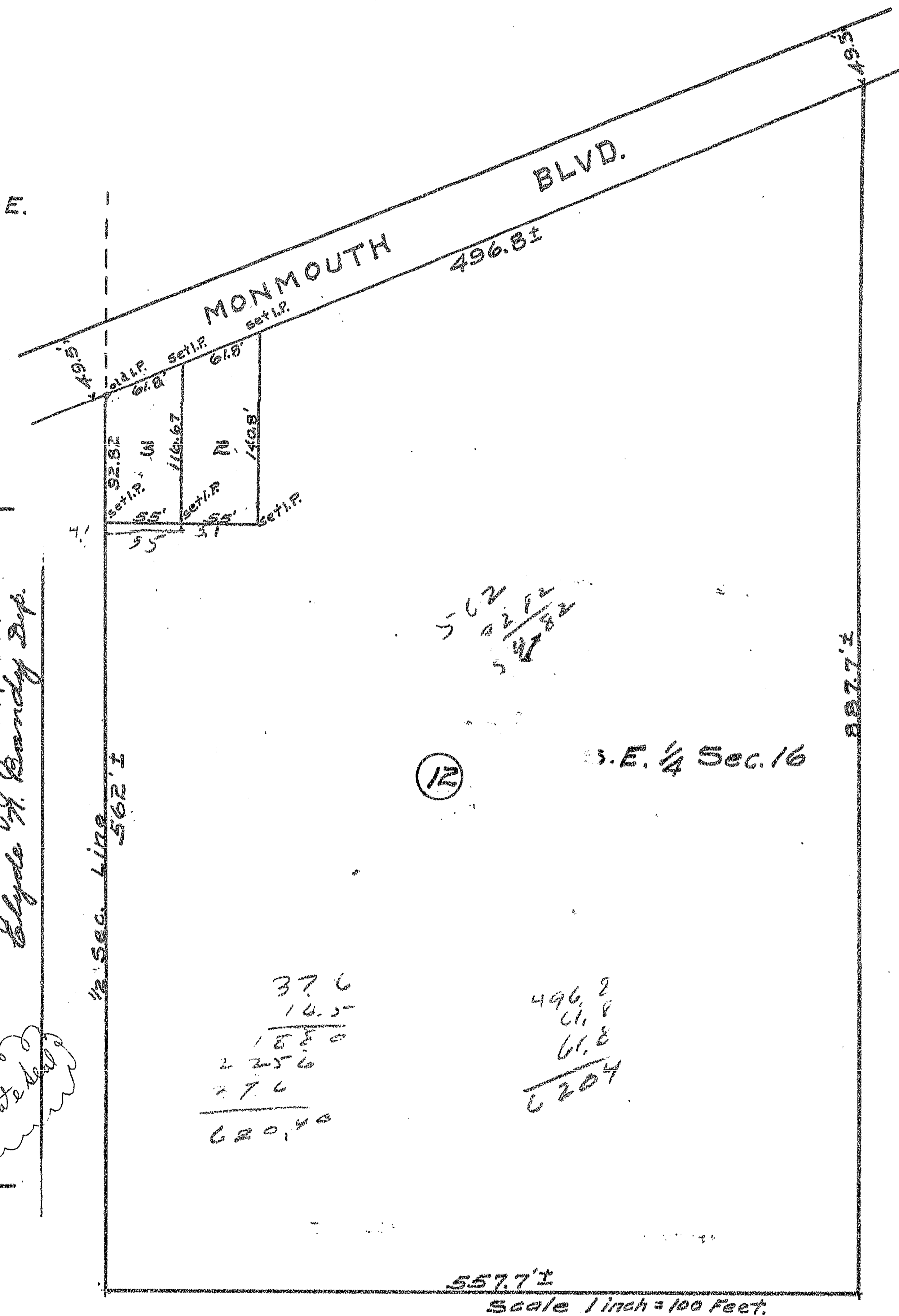
REVENUE PLAT 1926

OF
 A SUBDIVISION OF PART OF LOT 4 OF A SUBDIVISION OF FITCH ESTATE. BY HEIR'S IN THE S.E. 1/4 SEC. 16 GALESBURG T. P. KNOX CO. ILL. T. P. 11 N. R. 1 E. OF THE 4TH. P. M.



Approved by the City Council
 this the 16. Day of Aug. A. D. 1926

*Ben J. Huff Sec. By City Clerk
 Clyde H. Bandy Dep.*



STATE OF ILLINOIS, } ss.

Knox County, } I, *John Wilson* Deputy County Surveyor of said Knox County, do hereby certify that the foregoing and annexed is a true and correct Plat and description of Lands advertised for Survey and Platting by the County Clerk, as taken from the records of Knox County, and by measurements and survey, as provided for in Sections 62 and 63, Chapter 120, Revised Statutes of Illinois, 1903.

Dated this 5th day of June.

Approved by me, this 7th day of August, 1926. *John Wilson* Deputy, County Surveyor.

Geo. A. Larson, County Clerk.